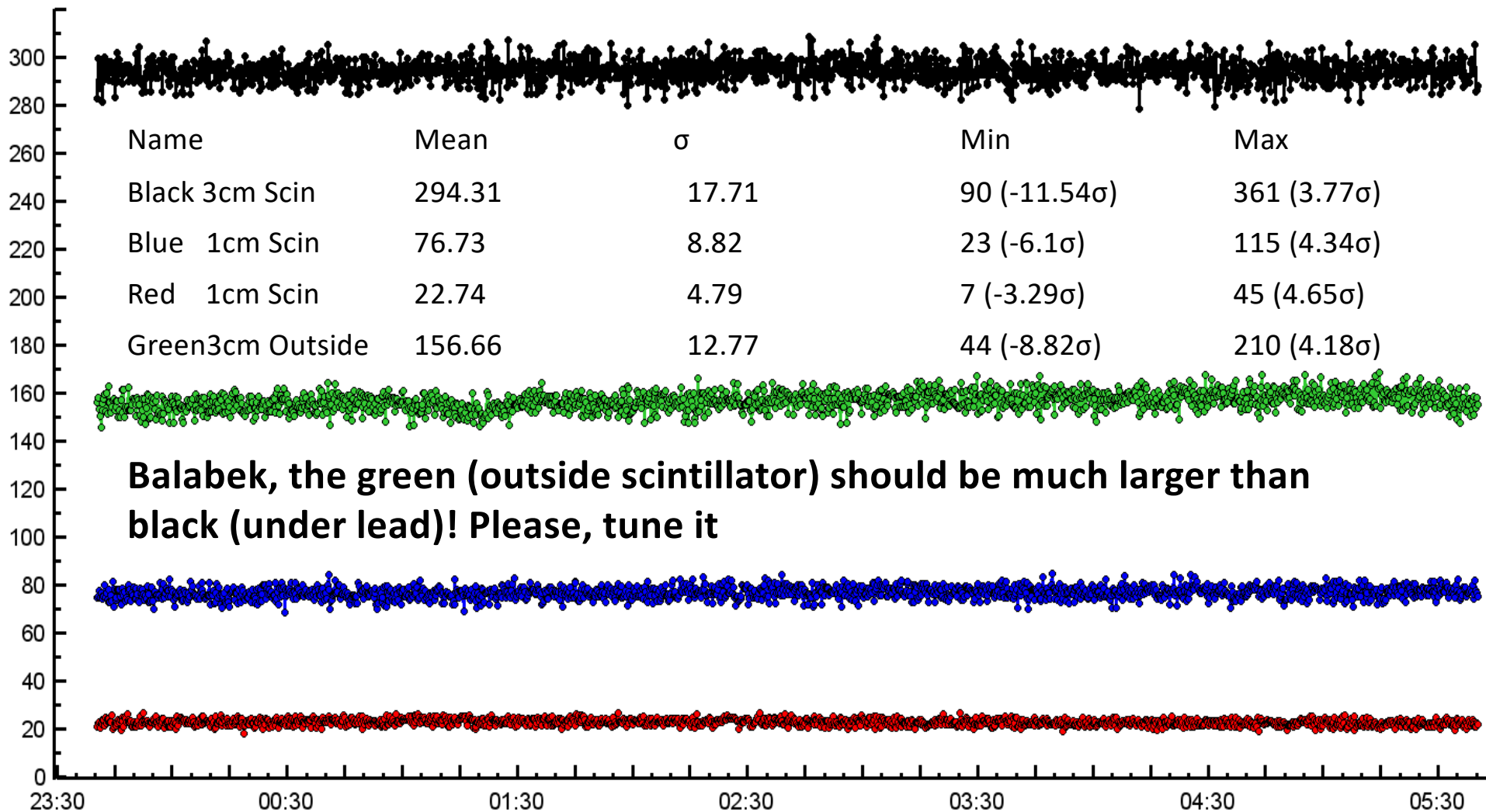


Typic Summer TGE when clouds are high. TGEs on Zugspitze: the storm was enormous, with multiple lightning flashes. However, TGEs were not large!

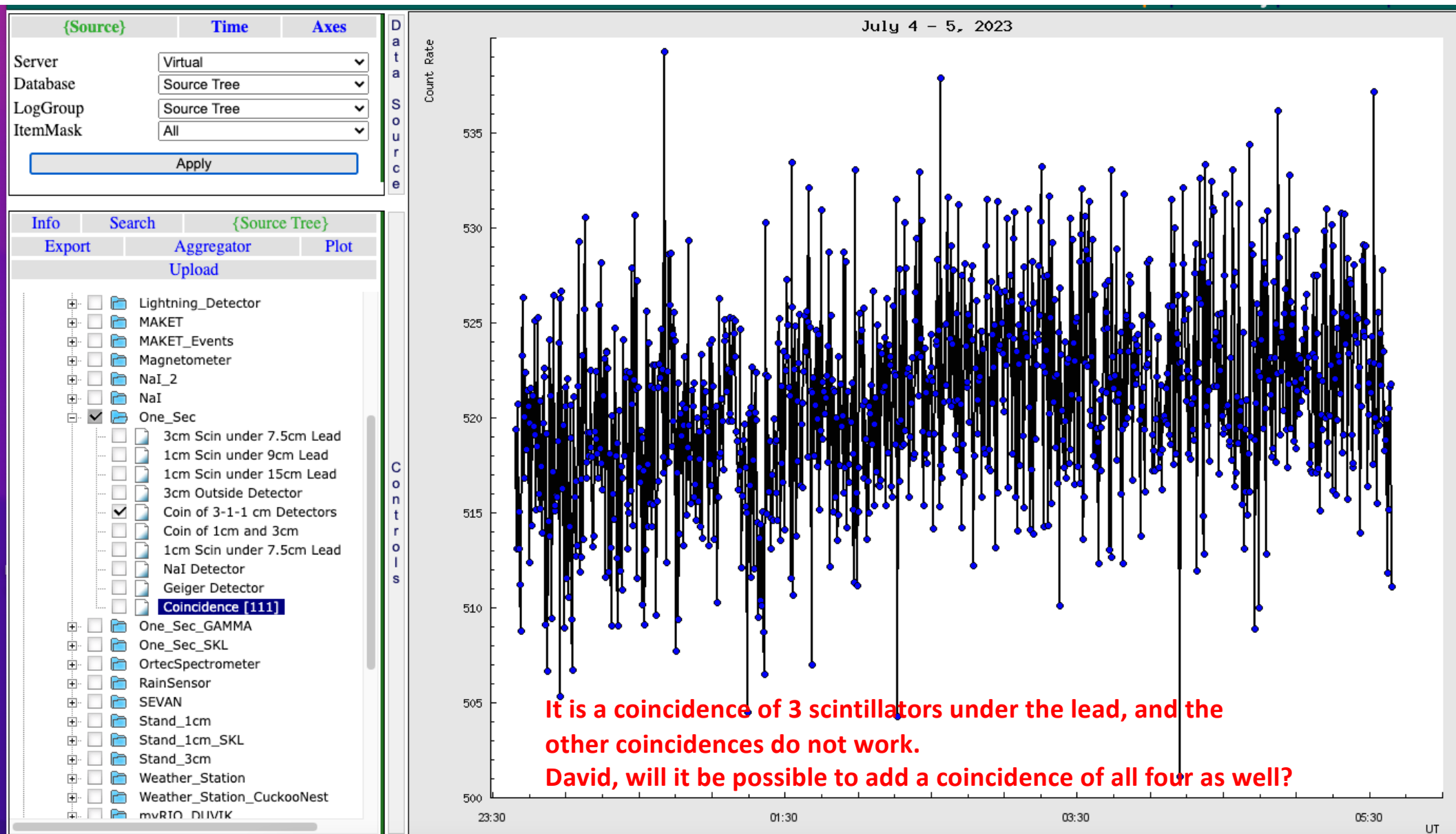
- The electric field terminates above 200 m from the ground, and only weakened flux of gamma rays reaches detectors.
- The Muon detector was repaired but needs intervention to tune count rates (Balabek)!
- Also, it will be good to introduce coincidences of all four scintillators of the muon detector (David).

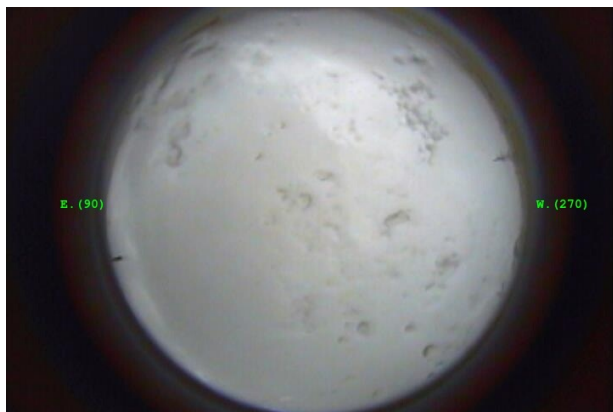
Count Rate



**Balabek, the green (outside scintillator) should be much larger than black (under lead)! Please, tune it**

Julv 4 - 5. 2023: Time (UT)





Hail/Graupel 14: - 14:20



